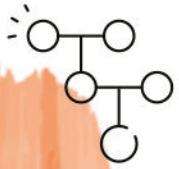


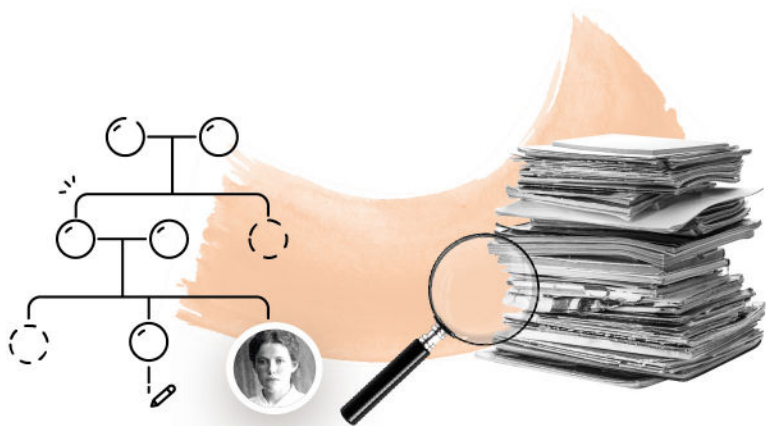


# How to Use MyHeritage to Discover Your Family History



## What Is MyHeritage?

MyHeritage is a family history and DNA testing platform where you can build your family tree and take your genealogy research to the next level. With its sophisticated matching technologies, vast collection of easily searchable historical records, and groundbreaking photo features, MyHeritage can help you discover new information about your ancestors and preserve their stories for your family to cherish for generations to come.



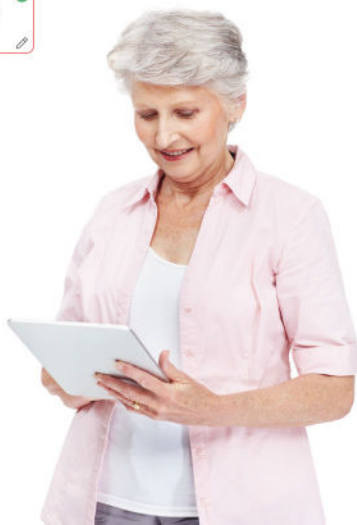
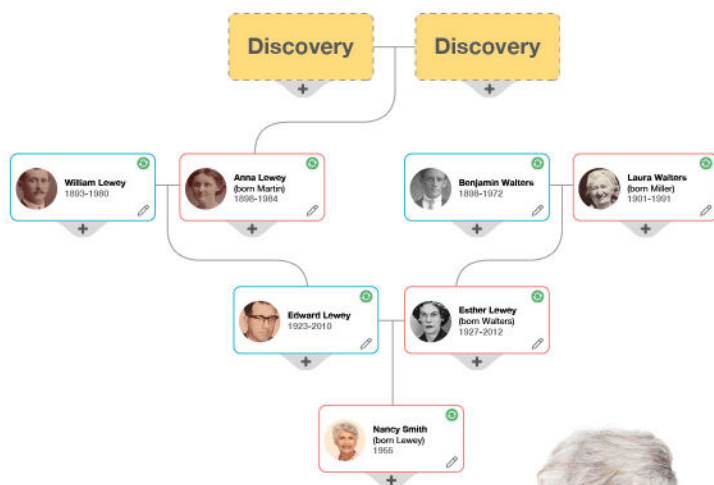
## Getting Started

To get started, visit [www.myheritage.com](http://www.myheritage.com) and sign up by entering your basic information into the form. If you've already started building a family tree, you can upload it as a GEDCOM file. Otherwise, an intro wizard will guide you through the first steps of building your tree. Rest assured that your data is safe — MyHeritage takes privacy and security very seriously.

## Building Your Family Tree

To add a new person to your tree, click the plus icon on a person's card and select the relationship of the individual you wish to add. Then enter basic details such as names, dates, and places, or select "Edit more" to add as many details as you like: education, occupation, hobbies and favorites, and more.

MyHeritage allows you to toggle between four different **tree views** and modify how your tree is displayed to help you navigate it easily. You can also use the search function to search for a particular person on your tree.



# Growing Your Tree with Automatic Matching Technology

**Smart Matches™** connect your family tree to other family trees on MyHeritage. Click the green Smart Match™ icon on a person's card to view all their matches. Review and confirm matches to extract new or different information to your tree.

**Record Matches** are historical records that match your ancestors and relatives. Click on the brown Record Match icon on a person's card to view all their matches. You can review and confirm matches and extract information to your family tree.

**Instant Discoveries™** take Smart Matching™ technology one step further: add entire branches to your family tree in a single click — or discover photos of your family members you may never have seen before.

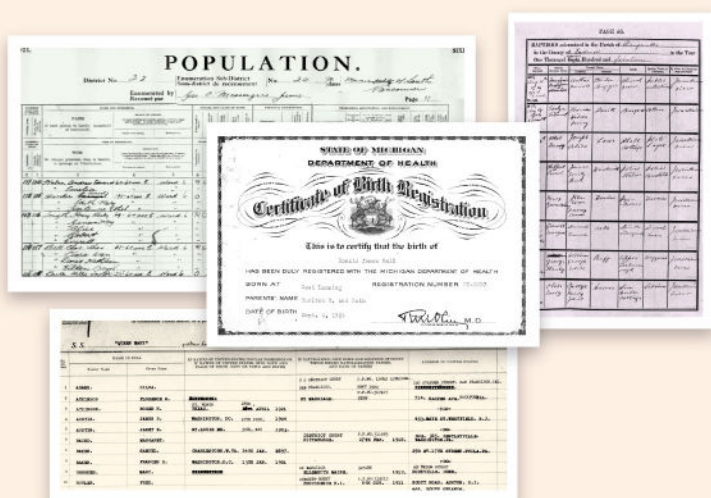




# Searching Historical Records

MyHeritage is home to a vast collection of billions of easily searchable historical records from all over the world, with billions more added each year.

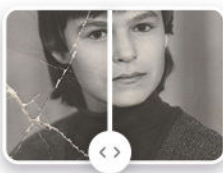
Simply enter the basic details like first, middle, and last names, and birth year or place into the search form and start discovering. You can modify your search as you go, adding or removing details such as additional relatives and other facts and keywords.



Search in one language and MyHeritage's Global Name Translation™ technology will even find records for you in other languages. When you find records of your ancestors, you can save them to your family members' profiles and extract all the information in the records to your tree in just a few clicks.

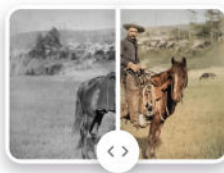
# Preserving & Improving Family Photos

Scan and upload your family photos to MyHeritage, where you can tag, label, and organize them. Then use MyHeritage's state-of-the-art photo features to repair, enhance, colorize, and animate them — or create stunning images of you traveling through time!



## Photo Repair

Automatically fixes  
scratched or  
damaged photos



## MyHeritage In Color™

Automatically  
colorizes black and  
white photos



## MyHeritage Photo Enhancer

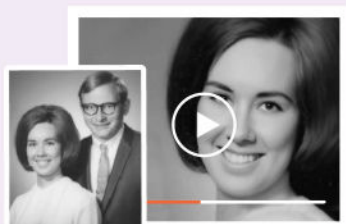
Brings blurry faces  
into sharp focus



## Photo Tagger

Tags multiple photos  
of a person in one  
click

# Create New Experiences With Your Photos



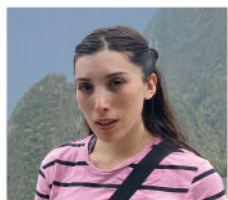
## Deep Nostalgia™

Creates a short animation of the faces in your photos



## DeepStory

Make photos of your ancestors speak and tell their own stories

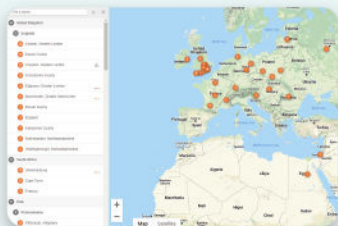


## AI Time Machine™

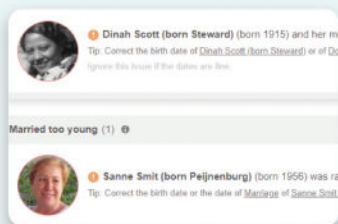
Transforms your photos into AI time-travel images and avatars



## Other Useful Genealogy Features



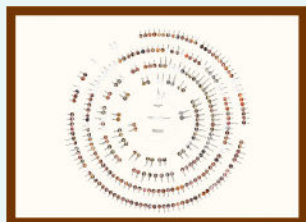
**PedigreeMap™** provides an interactive map of the locations in your family tree



**The Consistency Checker**  
identifies errors and  
inconsistencies in your tree  
and allows you to fix them  
quickly and easily



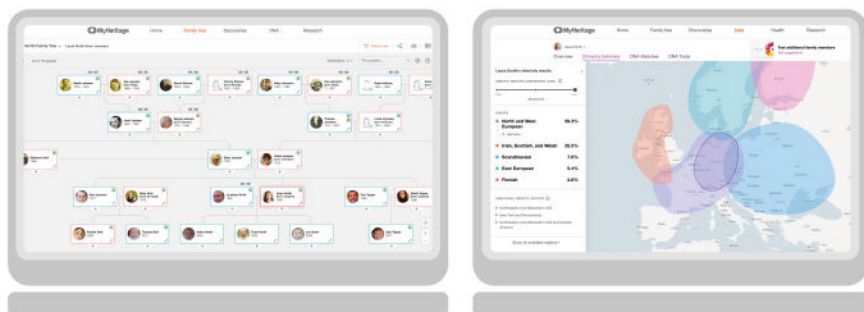
**Family Statistics** brings you enlightening and fun insights into your family tree based on data, trends, and analytics



Create a beautiful **family tree chart** or book to download, print at home, or have professionally printed



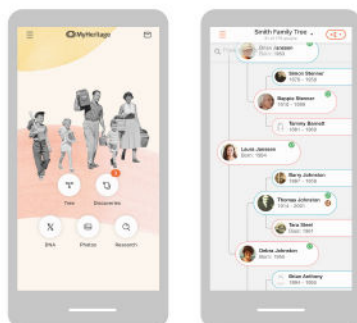
# Explore Your Family History Anytime, Anywhere



Research your family history and grow your family tree from anywhere by logging into the **MyHeritage** website



Download the free **Family Tree Builder** software to work on your tree even without Internet access



Access, edit, and build your tree on the go using the **MyHeritage** mobile app



# The MyHeritage DNA test

The MyHeritage DNA test can help you learn more about where your ancestors came from, find new relatives, and make progress with your research. With a simple cheek swab that takes just 2 minutes to complete, your results will include:



**Ethnicity Estimate & Genetic Groups:** Receive a breakdown of your ethnic origins and pinpoint where your ancestors came from across 2,114 geographic regions



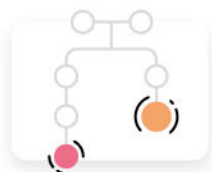
**DNA Matches:** Connect to people whose DNA matches yours — your relatives — from MyHeritage's global database



You can contact your DNA Matches directly through the MyHeritage system. MyHeritage also provides advanced DNA tools that can help you understand how your DNA Matches are related to you:



The Chromosome Browser allows you to visualize the DNA segments that you share with your matches to trace those segments back to a common ancestor



Theory of Family Relativity™ crafts theories about how you and your DNA Matches may be related based on billions of family tree profiles and historical records on MyHeritage



AutoClusters organizes your matches into clusters of individuals who likely descend from a common ancestor in a compelling visual chart

You can gather additional clues when reviewing each DNA Match by noting shared matches, ancestral surnames, ancestral locations, ethnicities, Genetic Groups, and more.

# Start Your Journey with MyHeritage

Visit [www.myheritage.com](http://www.myheritage.com) and sign up today to start discovering your family history.

To learn more about using MyHeritage to explore your family history, visit the MyHeritage Knowledge Base at [education.myheritage.com](http://education.myheritage.com).

